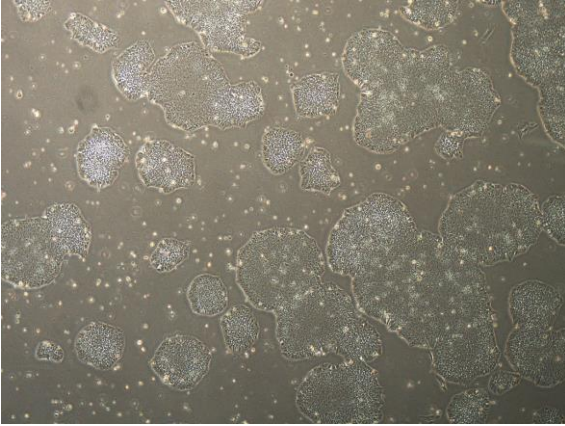
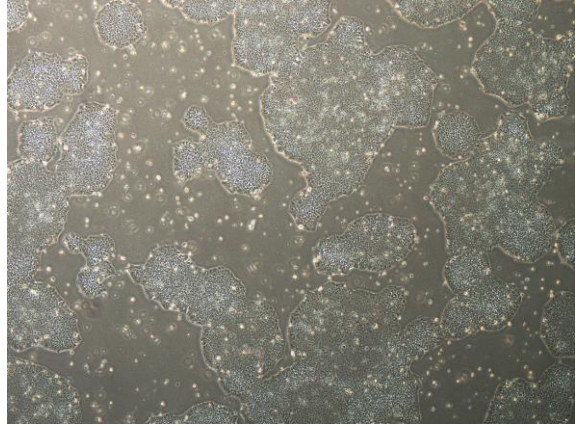


【 CiRA-j-1596 】 Morphology of iPSC colonies

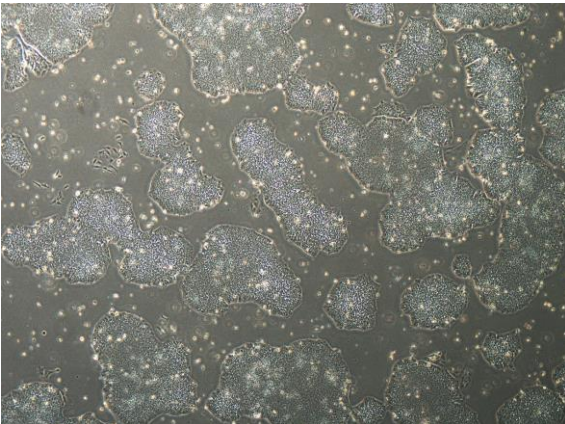
CiRA-j-1596-A: passage-3



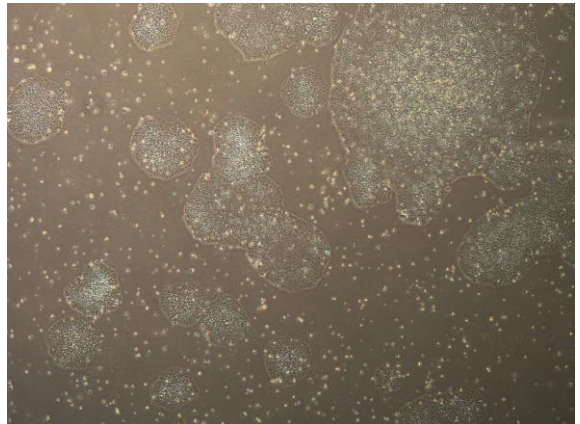
CiRA-j-1596-B: passage-3



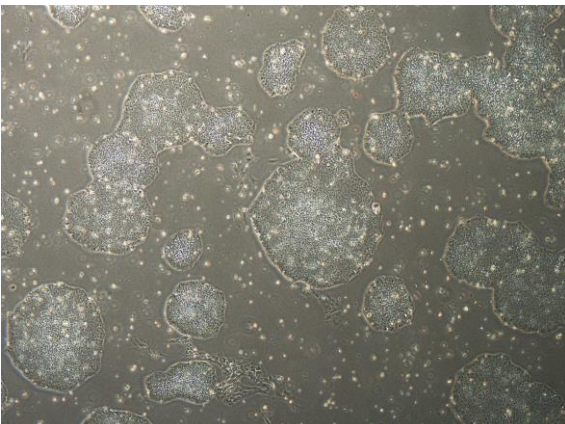
CiRA-j-1596-C: passage-3



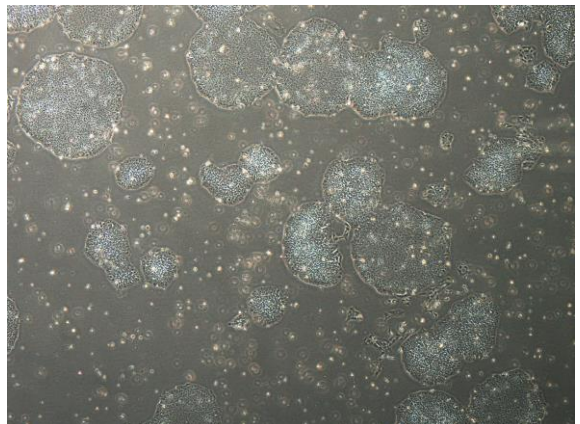
CiRA-j-1596-D: passage-3



CiRA-j-1596-E: passage-3



CiRA-j-1596-F: passage-3



(All images were captured at 4x magnification)